

Host your own



## RESOURCES

1. Thank you for **Going Yellow**
2. Checklist & top tips
3. Customizable poster
- 4-6. On the day signage
7. Customizable cake cards
8. Quiz (*optional resource*)
9. Quiz answers
- 10-11. Printable bunting
12. After your event information

## Thank You for Going Yellow!

From all of us at  
**Primrose Hospice and Family Support Centre,**  
thank you for getting involved in our  
**Go Yellow** campaign by hosting your very own  
Primrose Tea Party! 🍰🍪

Your generosity and support will help us to continue providing vital care for patients living with a life-limiting illness and supporting families in the North East Worcestershire area.

Whether you're a business, community group, school, sports club, or an individual, you can host your tea party your way! So, get your bake on, have fun, and make a difference - big or small, every event counts!

### **Need a little help getting started?**

Take a look at our checklist to plan your perfect tea party and stay organized. ❤️

## CHECKLIST

- Register your Primrose Tea Party** Set up your fundraising page here: [Primrose Tea Party Registration](#)
- Plan Your Event** Decide on a location: home, work, or a community venue? Choose a date and time that works best for you and your guests.
- Gather Support** Ask for help with baking cakes. Consider if you'll need extra hands on the day of the event.
- Spread the Word** Add your event details to your poster and share the date with friends, family, and colleagues. Personalise and share your fundraising page, don't forget to share it with those who can't make it but may like to make a donation.

### Give Your Primrose Tea Party a Special Touch

Host a bake-off  
competition

Share your  
inspiration for  
supporting  
Primrose  
Hospice

Theme your tea  
party



Remember to capture special moments at your tea party!



primrose  
hospice

Care Compassion Community

Join us for a



**DATE:**

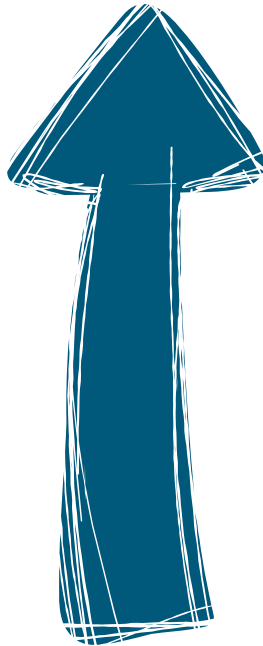
**TIME:**

**PLACE:**



primrose  
hospice

Care Compassion Community





primrose  
hospice

Care Compassion Community



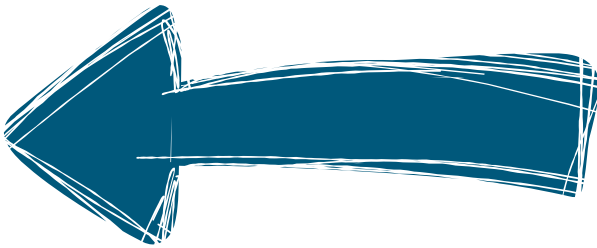
**THIS**  
**WAY**





primrose  
hospice

Care Compassion Community







# QUIZ TIME!!!



primrose  
hospice

Care Compassion Community

1

Which country is the largest producer of tea in the world?

- a) China
- b) India
- c) Sri Lanka
- d) Kenya

5

Which spice is commonly used to flavor chai tea?

- a) Paprika
- b) Rosemary
- c) Cinnamon
- d) Thyme

2

Which classic French cake consists of multiple layers of puff pastry and pastry cream, often topped with a marbled glaze?

- a) Opera Cake
- b) Mille-feuille
- c) Paris-Brest
- d) Saint-Honoré

6

The classic sandwich filling Coronation Chicken was invented for which royal occasion?

- a) Queen Elizabeth II's coronation
- b) King George VI's coronation
- c) Queen Victoria's Diamond Jubilee
- d) Prince Charles' investiture as Prince of Wales

3

What is the name of the sweet dish made of layers of filo pastry, nuts, and honey?

- a) Baklava
- b) Tiramisu
- c) Panna Cotta
- d) Churros

7

Which region in the UK is often credited with inventing the scone?

- a) Cornwall
- b) Devon
- c) Scotland
- d) Yorkshire

4

Which country is known for creating the sandwich?

- a) France
- b) Italy
- c) Spain
- d) England

8

Who won the 2024 Great British Bake off?



## QUIZ ANSWERS (correct answer in green)

1

Which country is the largest producer of tea in the world?

- a) China
- b) India
- c) Sri Lanka
- d) Kenya

5

Which spice is commonly used to flavor chai tea?

- a) Paprika
- b) Rosemary
- c) Cinnamon
- d) Thyme

2

Which classic French cake consists of multiple layers of puff pastry and pastry cream, often topped with a marbled glaze?

- a) Opera Cake
- b) Mille-feuille
- c) Paris-Brest
- d) Saint-Honoré

6

The classic sandwich filling Coronation Chicken was invented for which royal occasion?

- a) Queen Elizabeth II's coronation
- b) King George VI's coronation
- c) Queen Victoria's Diamond Jubilee
- d) Prince Charles' investiture as Prince of Wales

3

What is the name of the sweet dish made of layers of filo pastry, nuts, and honey?

- a) Baklava
- b) Tiramisu
- c) Panna Cotta
- d) Churros

7

Which region in the UK is often credited with inventing the scone?

- a) Cornwall
- b) Devon
- c) Scotland
- d) Yorkshire

4

Which country is known for creating the sandwich?

- a) France
- b) Italy
- c) Spain
- d) England

8

Who won the 2024 Great British Bake off?

Georgie Grasso



primrose  
hospice

Care Compassion Community



*Your Tea Party Bunting*



*Your Tea Party Bunting*



## DONATION INFORMATION

**A huge thank you for fundraising for Primrose Hospice! We hope you enjoyed hosting your tea party and that this becomes the start of an annual tradition to support Primrose Hospice.**

### **Paying in your donations:**

You can submit your donations via your sponsorship page, BACS transfer or over the phone. Please contact our fundraising team to confirm your payment and let us know when your fundraising has concluded.

### **Celebrate Your Success!**

We want to celebrate your amazing achievement. Our team will send you a special thank-you message, which you can share with your guests to acknowledge their efforts.



**Send us your fabulous photographs!**

✉ Contact Us: [fundraising@primrosehospice.org](mailto:fundraising@primrosehospice.org)

☎ Call Us: 01527 889796